

Universal Quick 320

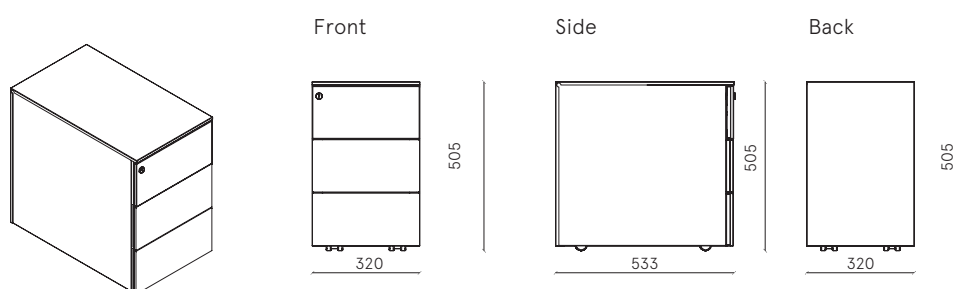
MADE IN ITALY

Pedestal with 3 box drawers, pre-assembled castors
W 320 mm x D 533 mm x H 505 mm

Body: metal
V1 ○ white RAL 9010
V6 ● aluminum RAL 9006

art. 9N550528C S711
art. 9N550528C S380

DESIGNER TAKIRO YUTA



Universal Quick 320

MADE IN ITALY

Pedestal with 3 box drawers, pre-assembled castors

W 320 mm x D 533 mm x H 505 mm

DESIGNER TAKIRO YUTA

DESCRIPTION	Pedestal with 3 box drawers, pre-assembled castors	COLORS	<ul style="list-style-type: none"> > Available in 2 standard colors: <ul style="list-style-type: none"> V1 white (RAL 9010) V6 aluminium (RAL 9006) > Standard semi-gloss colors > Customizable colors available upon request and with an extra charge: www.dieffebi.com/docs/299/2832/DFB_Colour-Chart-2020.pdf
EXTERNAL DIMENSIONS	W 320 mm x D 533 mm x H 505 mm		
INTERNAL DIMENSIONS	Drawer compartment: W 230 x D 483 x H 75 mm > Maximum useful height: H 110 mm		
PRODUCTION	<ul style="list-style-type: none"> > Dieffebi S.p.a. > Start of production: 2014 > Country of production: Italy 	ACCESSORIES	<ul style="list-style-type: none"> > Master key > Pencil tray > Soft closing mechanism > Rectangular fabric cushion
MATERIALS	> Recycled and recyclable metal	NET WEIGHT	16,40 Kg
FINISHING	<ul style="list-style-type: none"> > Powder painting after hot phosphodegreasing and fixing in ovens at 180 °; > non-toxic, zero-emission paints; > paint thickness: 80 microns 	MAINTENANCE	<ul style="list-style-type: none"> > Clean with a soft cloth > Do not treat the surfaces with abrasive cloths
STANDARD COMPONENTS	<ul style="list-style-type: none"> > Metal drawers > Roller guide with partial extraction > Swivel wheels diameter 37 mm embedded in the bottom > Centralized locking > Lock with 2 keys (fixed + folding) > Removable cylinder > Selective drawer opening system > Packaging with Dieffebi logo 	PACKAGING	<ul style="list-style-type: none"> > volume: 0,123 m³ > In recycled and recyclable cardboard box with 4 protective polystyrene corners and double bottom in shaped cardboard > Multiple on pallet > Supplied assembled > Packages: 1
		END OF USE	> Equipped with disassembly card for disposal
		WARRANTY	> Dieffebi guarantees that the product was made using high quality materials - See warranty document

Universal Quick 320

MADE IN ITALY

Pedestal with 3 box drawers, pre-assembled
castors

W 320 mm x D 533 mm x H 505 mm

DESIGNER TAKIRO YUTA

WELLNESS AND ENVIRONMENT > Green design in accordance with LEED® standards, to design and furnish environments with a high sustainability content



www.GreenTop.com



STRUCTURE TEST EN 14073-2/2004, par. 3.4
EN 14073-3/2004, par. 5.4
EN 14073-3/2004, par. 5.5
EN 14074/2004, par. 6.2.1
EN 14074/2004, par. 6.2.2
EN 14074/2004, par. 6.2.3
EN 14074/2004, par. 6.2.4
EN 14074/2004, par. 6.7
EN 16122/2012 + AC:2015, par.7.5.5

METAL TEST UNI EN ISO 2409:2013 EN ISO 1520:2006
NSS UNI EN ISO 9227:2017 UNI EN ISO 6272-1:2013
UNI EN 15187:2007 UNI EN 15185:2011
EN 12720:2013 UNI EN 15186:2012, met. B
EN 12721:2013 UNI 9300:2015
UNI 9429:2015

CERTIFICATION NF Environnement
Certifié par FCBA - Ameublement



CLASS OF REACTION TO FIRE > Class 0

POSITIONING > Free standing



dieffebi



MADE IN EUROPE



ASSUFFICIO
ASSOCIAZIONE FIDELIENSI/ARREDO

ADIMEMBER



consip
acquistinretepa.it

Dieffebi SpA

via Palù 36
San Vendemiano,
31020 Treviso - Italia

T +39 0438 4715
F +39 0438 471600
exportsales@dieffebi.com
vendite@dieffebi.com
www.dieffebi.com

Universal Quick 320

Varnish
Vernici
Vernis
Lacke

Cabinet Body
Corpo
Caisson
Korpus



-V1
S711 (RAL 9010)
Pure white



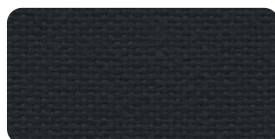
-V6
S380 (RAL 9006)
White aluminium

Fabrics
Tessuti
Tissus
Textilien

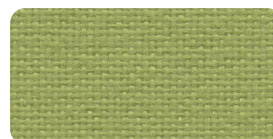
Seat pad
Cuscino
Coussin
Kissen



-T3
8009
Jet, Fidivi



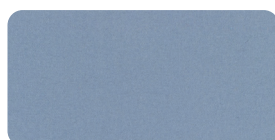
-T4
8033
Jet, Fidivi



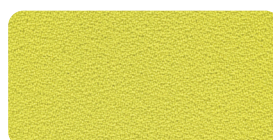
-T12
7041
Jet, Fidivi



-T7
213
Divina MD, Kvadrat



-T18
701
Hero, Kvadrat



-T24
462
Mirage, Pugi - PG



-T31
133
Mirage, Pugi - PG

Universal Quick 320

MADE IN ITALY

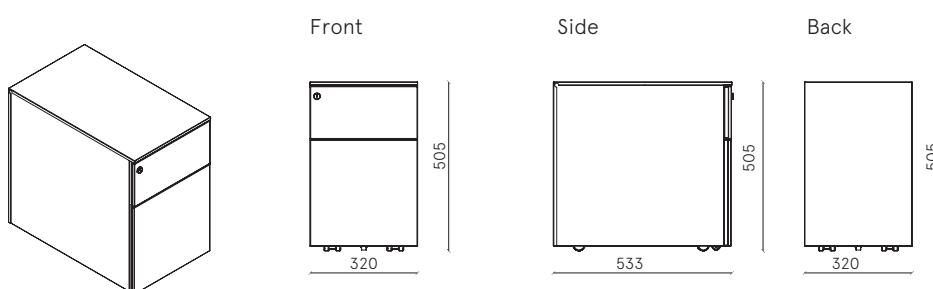
Pedestal with 1 box drawer and 1 filing drawer,
pre-assembled castors

Body: metal
V1 ○ white RAL 9010
V6 ● aluminium RAL 9006

art. 9N540528C S711
art. 9N540528C S380

W 320 mm x D 533 mm x H 505 mm

DESIGNER TAKIRO YUTA



Universal Quick 320

MADE IN ITALY

Pedestal with 1 box drawer and 1 filing drawer,
pre-assembled castors
W 320 mm x D 533 mm x H 505 mm

DESIGNER TAKIRO YUTA

DESCRIPTION Pedestal with 1 box drawer and 1 filing drawer, pre-assembled castors

EXTERNAL DIMENSIONS W 320 mm x D 533 mm x H 505 mm

INTERNAL DIMENSIONS Drawer compartment: W 230 x D 483 x H 75 mm
> Maximum useful height: H 110 mm
Filing compartment: W 225 x D 470 x H 238 mm
> Maximum useful height: H 270 mm

HANGING FILES Hanging files capacity: n° 18

PRODUCTION > Dieffebi S.p.a.
> Start of production: 2014
> Country of production: Italy

MATERIALS > Recycled and recyclable metal

FINISHING > Powder painting after hot phosphodegreasing and fixing in ovens at 180 °;
> non-toxic, zero-emission paints;
> paint thickness: 80 microns

STANDARD COMPONENTS > Metal drawers
> Roller guide with partial extraction
> Full extension ball guide on the filing cabinet
> Swivel wheels diameter 37 mm embedded in the bottom
> 5th anti-tip wheel
> Centralized locking
> Lock with 2 keys (fixed + folding)
> Removable cylinder
> Selective drawer opening system
> 330/390 mm suspension file converter
> Packaging with Dieffebi logo

COLORS > Available in 2 standard colors:
V1 white (RAL 9010)
V6 aluminium (RAL 9006)
> Standard semi-gloss colors
> Customizable colors available upon request and with an extra charge:
www.dieffebi.com/docs/299/2832/DFB_Colour-Chart-2020.pdf

ACCESSORIES > Master key
> Pencil tray
> Soft closing mechanism (excluding the classifier)
> Rectangular fabric cushion

NET WEIGHT 16,50 Kg

MAINTENANCE > Clean with a soft cloth
> Do not treat the surfaces with abrasive cloths

PACKAGING > volume: 0,123 m³
> In recycled and recyclable cardboard box with 4 protective polystyrene corners and double bottom in shaped cardboard
> Multiple on pallet
> Supplied assembled (except for the 5th anti-tip wheel)
> Packages: 1

END OF USE > Equipped with disassembly card for disposal

WARRANTY > Dieffebi guarantees that the product was made using high quality materials - [See warranty document](#)

Universal Quick 320

MADE IN ITALY

Pedestal with 1 box drawer and 1 filing drawer,
pre-assembled castors
W 320 mm x D 533 mm x H 505 mm

DESIGNER TAKIRO YUTA

WELLNESS AND ENVIRONMENT > Green design in accordance with LEED® standards, to design and furnish environments with a high sustainability content



STRUCTURE TEST EN 14073-2/2004, par. 3.4
EN 14073-3/2004, par. 5.4
EN 14073-3/2004, par. 5.5
EN 14074/2004, par. 6.2.1
EN 14074/2004, par. 6.2.2
EN 14074/2004, par. 6.2.3
EN 14074/2004, par. 6.2.4
EN 14074/2004, par. 6.7
EN 16122/2012 + AC:2015, par.7.5.5

METAL TEST UNI EN ISO 2409:2013 EN ISO 1520:2006
NSS UNI EN ISO 9227:2017 UNI EN ISO 6272-1:2013
UNI EN 15187:2007 UNI EN 15185:2011
EN 12720:2013 UNI EN 15186:2012, met. B
EN 12721:2013 UNI 9300:2015
UNI 9429:2015

CERTIFICATION NF Environnement
Certifié par FCBA - Ameublement



CLASS OF > Class 0

REACTION TO FIRE

POSITIONING > Free standing



ADIMEMBER



Universal Quick 320

Varnish
Vernici
Vernis
Lacke

Cabinet Body
Corpo
Caisson
Korpus



-V1
S711 (RAL 9010)
Pure white



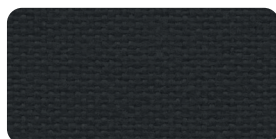
-V6
S380 (RAL 9006)
White aluminium

Fabrics
Tessuti
Tissus
Textilien

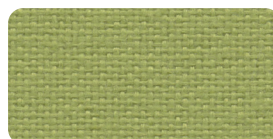
Seat pad
Cuscino
Coussin
Kissen



-T3
8009
Jet, Fidivi



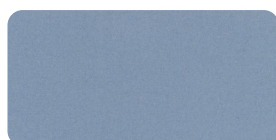
-T4
8033
Jet, Fidivi



-T12
7041
Jet, Fidivi



-T7
213
Divina MD, Kvadrat



-T18
701
Hero, Kvadrat



-T24
462
Mirage, Pugi - PG



-T31
133
Mirage, Pugi - PG

Universal Quick 420

MADE IN ITALY

Pedestal with 3 box drawers,
pre-assembled castors

W 420 mm x D 533 mm x H 505 mm

DESIGNER TAKIRO YUTA

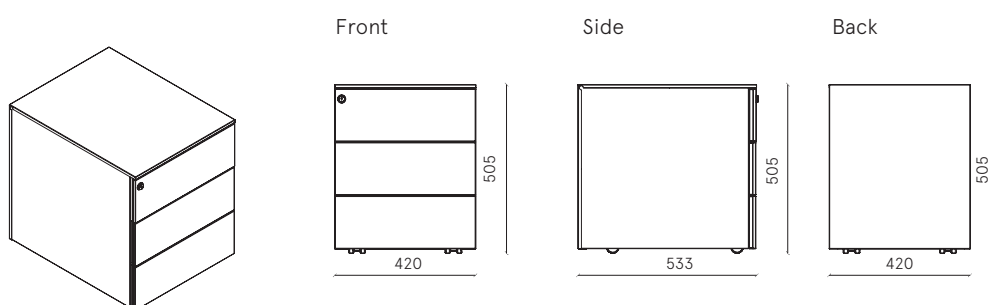
Body: metal

V1 ○ white RAL 9010

V6 ● aluminium RAL 9006

art. 9N15F512G S711

art. 9N15F512G S380



Universal Quick 420

MADE IN ITALY

Pedestal with 3 box drawers,
pre-assembled castors
W 420 mm x D 533 mm x H 505 mm

DESIGNER TAKIRO YUTA

DESCRIPTION	Pedestal with 3 box drawers, pre-assembled castors	COLORS	<ul style="list-style-type: none"> > Available in 2 standard colors: V1 white (RAL 9010) V6 aluminium (RAL 9006) > Standard semi-gloss colors > Customizable colors available upon request and with an extra charge: www.dieffebi.com/docs/299/2832/DFB_Colour-Chart-2020.pdf
EXTERNAL DIMENSIONS	W 420 mm x D 533 mm x H 505 mm	ACCESSORIES	<ul style="list-style-type: none"> > Master key > Pencil tray > Soft closing mechanism > Rectangular fabric cushion
INTERNAL DIMENSIONS	Drawer compartment: W 330 x D 483 x H 75 mm > Maximum useful height: H 110 mm	NET WEIGHT	17,90 Kg
PRODUCTION	<ul style="list-style-type: none"> > Dieffebi S.p.a. > Start of production: 2014 > Country of production: Italy 	MAINTENANCE	<ul style="list-style-type: none"> > Clean with a soft cloth > Do not treat the surfaces with abrasive cloths
MATERIALS	> Recycled and recyclable metal	PACKAGING	<ul style="list-style-type: none"> > volume: 0,156 m³ > In recycled and recyclable cardboard box with 4 protective polystyrene corners and double bottom in shaped cardboard > Multiple on pallet > Supplied assembled > Packages: 1
FINISHING	<ul style="list-style-type: none"> > Powder painting after hot phosphodegreasing and fixing in ovens at 180 °; > non-toxic, zero-emission paints; > paint thickness: 80 microns 	END OF USE	> Equipped with disassembly card for disposal
STANDARD COMPONENTS	<ul style="list-style-type: none"> > Metal drawers > Roller guide with partial extraction > Swivel wheels diameter 37 mm embedded in the bottom > Centralized locking > Lock with 2 keys (fixed + folding) > Removable cylinder > Selective drawer opening system > Packaging with Dieffebi logo 	WARRANTY	> Dieffebi guarantees that the product was made using high quality materials - See warranty document

Universal Quick 420

MADE IN ITALY

Pedestal with 3 box drawers,
pre-assembled castors
W 420 mm x D 533 mm x H 505 mm

DESIGNER TAKIRO YUTA

WELLNESS AND ENVIRONMENT > Green design in accordance with LEED® standards, to design and furnish environments with a high sustainability content



www.GreeniTop.com



STRUCTURE TEST EN 14073-2/2004, par. 3.4
EN 14073-3/2004, par. 5.4
EN 14073-3/2004, par. 5.5
EN 14074/2004, par. 6.2.1
EN 14074/2004, par. 6.2.2
EN 14074/2004, par. 6.2.3
EN 14074/2004, par. 6.7
EN 16122/2012 + AC:2015, par.7.5.5

METAL TEST UNI EN ISO 2409:2013 EN ISO 1520:2006
NSS UNI EN ISO 9227:2017 UNI EN ISO 6272-1:2013
UNI EN 15187:2007 UNI EN 15185:2011
EN 12720:2013 UNI EN 15186:2012, met. B
EN 12721:2013 UNI 9300:2015
UNI 9429:2015

CERTIFICATION NF Environnement
Certifié par FCBA - Ameublement



CLASS OF REACTION TO FIRE > Class 0

POSITIONING > Free standing



dieffebi



MADE IN EUROPE



ASSUFFICIO
ASSOCIAZIONE FIDELIENSI/ARREDICI

ADIMEMBER



consip
acquistinretepa.it

Dieffebi SpA

via Palù 36
San Vendemiano,
31020 Treviso - Italia

T +39 0438 4715
F +39 0438 471600
exportsales@dieffebi.com
vendite@dieffebi.com
www.dieffebi.com

Universal Quick 420

Varnish
Vernici
Vernis
Lacke

Cabinet Body
Corpo
Caisson
Korpus



-V1
S711 (RAL 9010)
Pure white



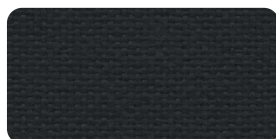
-V6
S380 (RAL 9006)
White aluminium

Fabrics
Tessuti
Tissus
Textilien

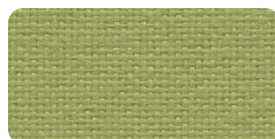
Seat pad
Cuscino
Coussin
Kissen



-T3
8009
Jet, Fidivi



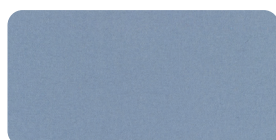
-T4
8033
Jet, Fidivi



-T12
7041
Jet, Fidivi



-T7
213
Divina MD, Kvadrat



-T18
701
Hero, Kvadrat



-T24
462
Mirage, Pugi - PG



-T31
133
Mirage, Pugi - PG

Universal Quick 420

MADE IN ITALY

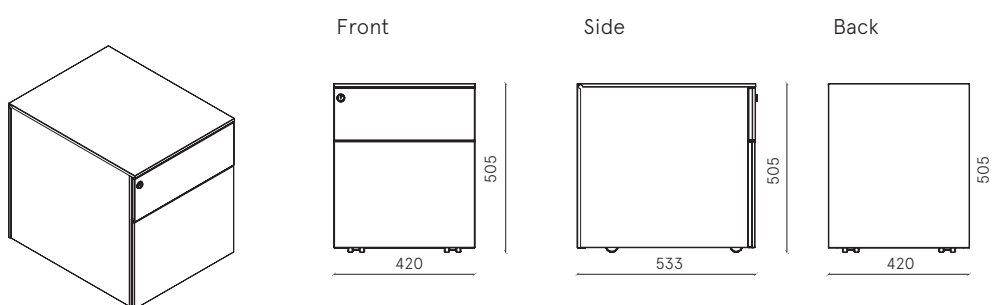
Pedestal with 1 box drawer and 1 filing drawer,
pre-assembled castors

Body: metal
V1 ○ white RAL 9010
V6 ● aluminium RAL 9006

art. 9N14F512G S711
art. 9N14F512G S380

W 420 mm x D 533 mm x H 505 mm

DESIGNER TAKIRO YUTA



Universal Quick 420

MADE IN ITALY

Pedestal with 1 box drawer and 1 filing drawer, pre-assembled castors

W 420 mm x D 533 mm x H 505 mm

DESIGNER TAKIRO YUTA

DESCRIPTION Pedestal with 1 box drawer and 1 filing drawer, pre-assembled castors

EXTERNAL DIMENSIONS W 420 mm x D 533 mm x H 505 mm

INTERNAL DIMENSIONS Drawer compartment: W 330 x D 483 x H 75 mm
> Maximum useful height: H 110 mm
Filing compartment: W 325 x D 470 x H 238 mm
> Maximum useful height: H 270 mm

HANGING FILES Nr. 39 hanging files of 330 mm or 27 hanging files of 390 mm with the use of the dividing bar

PRODUCTION > Dieffebi S.p.a.
> Start of production: 2014
> Country of production: Italy

MATERIALS > Recycled and recyclable metal

FINISHING > Powder painting after hot phosphodegreasing and fixing in ovens at 180 °;
> non-toxic, zero-emission paints;
> paint thickness: 80 microns

STANDARD COMPONENTS > Metal drawers
> Roller guide with partial extraction
> Full extension ball guide on the filing cabinet
> Swivel wheels diameter 37 mm embedded in the bottom
> 5th anti-tip wheel
> Centralized locking
> Lock with 2 keys (fixed + folding)
> Removable cylinder
> Selective drawer opening system
> 330/390 mm suspension file converter
> Packaging with Dieffebi logo

COLORS > Available in 2 standard colors:
V1 white (RAL 9010)
V6 aluminium (RAL 9006)
> Standard semi-gloss colors
> Customizable colors available upon request and with an extra charge:
www.dieffebi.com/docs/299/2832/DFB_Colour-Chart-2020.pdf

ACCESSORIES > Master key
> Pencil tray
> Soft closing mechanism (excluding the classifier)
> Rectangular fabric cushion
> Bar division by filing cabinet

NET WEIGHT 18,10 Kg

MAINTENANCE > Clean with a soft cloth
> Do not treat the surfaces with abrasive cloths

PACKAGING > volume: 0,156 m³
> In recycled and recyclable cardboard box with 4 protective polystyrene corners and double bottom in shaped cardboard
> Multiple on pallet
> Supplied assembled (except for the 5th anti-tip wheel)
> Packages: 1

END OF USE > Equipped with disassembly card for disposal

WARRANTY > Dieffebi guarantees that the product was made using high quality materials - [See warranty document](#)

Universal Quick 420

MADE IN ITALY

Pedestal with 1 box drawer and 1 filing drawer, pre-assembled castors

W 420 mm x D 533 mm x H 505 mm

DESIGNER TAKIRO YUTA

WELLNESS AND ENVIRONMENT > Green design in accordance with LEED® standards, to design and furnish environments with a high sustainability content



www.GreenTop.com



STRUCTURE TEST EN 14073-2/2004, par. 3.4
 EN 14073-3/2004, par. 5.4
 EN 14073-3/2004, par. 5.5
 EN 14074/2004, par. 6.2.1
 EN 14074/2004, par. 6.2.2
 EN 14074/2004, par. 6.2.3
 EN 14074/2004, par. 6.2.4
 EN 14074/2004, par. 6.7
 EN 16122/2012 + AC:2015, par.7.5.5

METAL TEST UNI EN ISO 2409:2013 EN ISO 1520:2006
 NSS UNI EN ISO 9227:2017 UNI EN ISO 6272-1:2013
 UNI EN 15187:2007 UNI EN 15185:2011
 EN 12720:2013 UNI EN 15186:2012, met. B
 EN 12721:2013 UNI 9300:2015
 UNI 9429:2015

CERTIFICATION NF Environnement
 Certifié par FCBA - Ameublement



CLASS OF > Class 0

REACTION TO FIRE

POSITIONING > Free standing



dieffebi



MADE IN EUROPE



ASSUFFICIO
 ASSOCIAZIONE FIDELIENEGARRECO

ADIMEMBER



consip
 acquistinretepa.it

Universal Quick 420

Varnish
Vernici
Vernis
Lacke

Cabinet Body
Corpo
Caisson
Korpus



-V1
S711 (RAL 9010)
Pure white



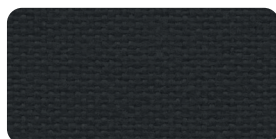
-V6
S380 (RAL 9006)
White aluminium

Fabrics
Tessuti
Tissus
Textilien

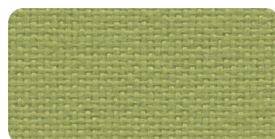
Seat pad
Cuscino
Coussin
Kissen



-T3
8009
Jet, Fidivi



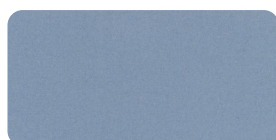
-T4
8033
Jet, Fidivi



-T12
7041
Jet, Fidivi



-T7
213
Divina MD, Kvadrat



-T18
701
Hero, Kvadrat



-T24
462
Mirage, Pugi - PG



-T31
133
Mirage, Pugi - PG