



DotBox

MADE IN ITALY

Corner unit 90°

W 410 x D 410 x H 400 mm

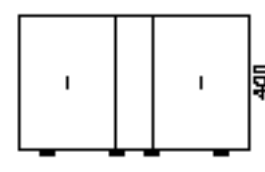
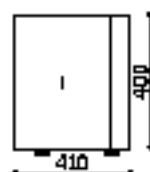
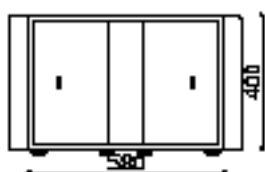
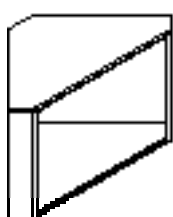
V1  white RAL 9010 art.6D0700010 S711
 V2  silk grey RAL 7044 art.6D0700010 7044

DESIGNER Hangar Design Group

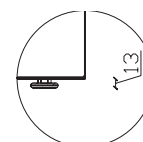
Front

Side

Back



Feet detail



DotBox

MADE IN ITALY

Corner unit 90°
W 410 x D 410 x H 400 mm

DESIGNER Hangar Design Group

DESCRIPTION	Modular system
DIMENSIONS	W 580 mm x D 410 mm x H 400 mm
INTERNAL DIMENSIONS	W 542 mm x D 340 mm (KEYSTONE) x H 365 mm
PRODUCTION	<ul style="list-style-type: none"> > Dieffebi S.p.a. > Start of production: 2013 > Country of production: Italy
MAINTENANCE	<ul style="list-style-type: none"> > Clean with a soft cloth > Do not treat the surfaces with abrasive cloths
MATERIALS	> Structure made of recycled and recyclable metal
FINISHING	<ul style="list-style-type: none"> > Low-emission powder coating (material inert) > Free from heavy metals > Absence of sharp edges and cutting edges > Anti-glare finish > It does not contain VOCs
STANDARD COMPONENTS	<ul style="list-style-type: none"> > Nylon feet 13mmH > Screws for fixing between modules

COLORS	<ul style="list-style-type: none"> > Available in 2 standard colors > Standard semi-gloss colors > Customizable colors available upon request and with an extra charge <p>www.dieffebi.com/docs/299/2832/DFB_Colour-Chart-2020.pdf</p> <p>www.dieffebi.com/it/news</p>
---------------	--

ACCESSORIES	<ul style="list-style-type: none"> > Top in white lacquered glass RAL 9010 > Cushions in M1 class fireproof fabric available in 7 standard colors: green, gray, black, light blue, light beige, orange, yellow > Chromed leveling feet h 110 mm > Set of 4 castors with brake - ø 65 mm > Set of 4 castors without brake - ø 65 mm
--------------------	--

NET WEIGHT	9,50 Kg
-------------------	---------

PACKAGING	<ul style="list-style-type: none"> > volume: 0,20 m³ > recycled and recyclable cardboard > Multiple on pallets > Optimized for transport with CO2 reduction > Supplied: assembled > No. of packages: 1
------------------	---

END OF USE	> Equipped with disassembly card for disposal
-------------------	---

WARRANTY	> Dieffebi guarantees that the product was made using high quality materials - See warranty document
-----------------	--

DotBox

MADE IN ITALY

Corner unit 90°
W 410 x D 410 x H 400 mm

DESIGNER Hangar Design Group

WELLNESS AND ENVIRONMENT > Green design in accordance with LEED® standards, to design and furnish environments with a high sustainability content



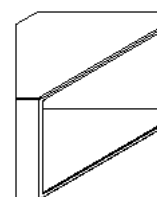
www.GreenTop.com



ASSEMBLY CONSTRAINTS > Compositions:
on the wall center of the room on wheels



> Composition: wall example



1° LIVELLO
STEP 1

METAL TEST > UNI EN ISO 2409:2013 > EN ISO 1520:2006
> NSS UNI EN ISO 9227:2017 > UNI 9300:2015
> UNI EN 15187:2007 > UNI EN ISO 6272-1:2013
> EN 12720:2013 > UNI EN 15185:2011
> EN 12721:2013 > UNI EN 15186:2012, met.B
> UNI 9429:2015

CLASS OF REACTION TO FIRE > Class 0

POSITIONING > Both on the wall and in the center of the room

MODULARITY > Horizontal



dieffebi



MADE IN EUROPE



ASSUFFICIO
ASSOCIAZIONE FIDELIENGINNERICI

ADIMEMBER



consip
acquistinretepa.it
Il Portale degli Appalti della Pubblica Amministrazione

Dieffebi SpA

via Palù 36
San Vendemiano,
31020 Treviso - Italia

T +39 0438 4715
F +39 0438 471600
exportsales@dieffebi.com
vendite@dieffebi.com
www.dieffebi.com

DotBox

MADE IN ITALY

Varnish
Vernici
Vernis
Lacke

Cabinet Body
Corpo
Caisson
Korpus



-V1
S711 (RAL 9010)
Pure white



-V2
7044 (RAL 7044)
Silk grey

Glass
Vetro
Verre
Glas

Lacquer
Laccato
Laqué
Lackiert

Top
Piano
Plateau
Tischplatte



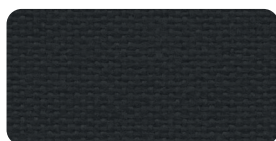
-G1
Bianco/White/Blanc/Weiß

Fabrics
Tessuti
Tissus
Textilien

Cushion
Cuscino
Coussin
Sitzkissen



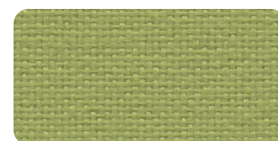
- T3
8009
Jet, Fidivi



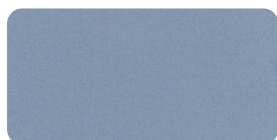
- T4
8033
Jet, Fidivi



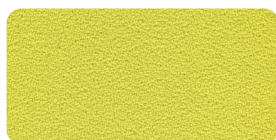
-T7
213
Divina MD, Kvadrat



-T12
7041
Jet, Fidivi



- T18
701
Hero, Kvadrat



- T24
462
Mirage, Pugi · PG



-T31
133
Mirage, Pugi · PG

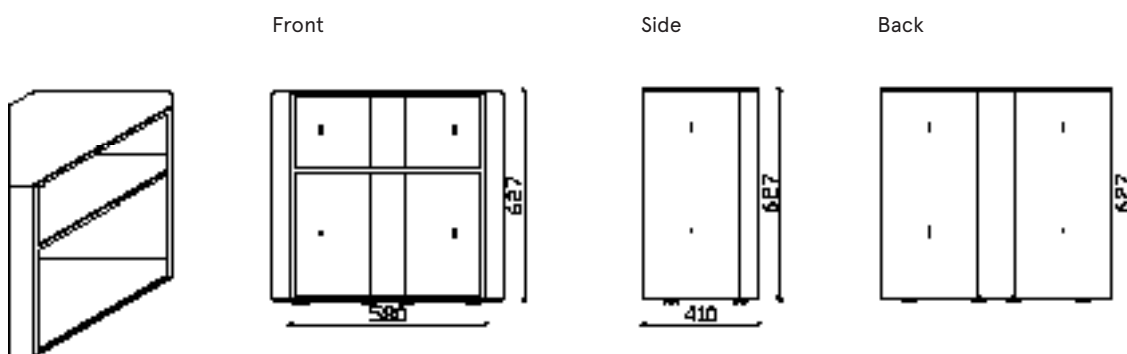
DotBox

MADE IN ITALY

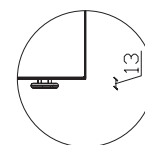
Corner unit 90°
W 410 x D 410 x H 627 mm

V1 ○ white RAL 9010 art.6D0900010 S711
V2 ● silk grey RAL 7044 art.6D0900010 7044

DESIGNER Hangar Design Group



Dettaglio Piede



DotBox

MADE IN ITALY

Corner unit 90°

W 410 x D 410 x H 627 mm

DESIGNER Hangar Design Group

DESCRIPTION Modular system

DIMENSIONS W 580 mm x D 410 mm x H 627 mm

INTERNAL DIMENSIONS Compartment below W 542 mm x D 340 mm (KEYSTONE) x H 365 mm - Compartment above W 542 mm x D 340 mm (KEYSTONE) x H 210 mm

PRODUCTION

- > Dieffebi S.p.a.
- > Start of production: 2013
- > Country of production: Italy

MAINTENANCE

- > Clean with a soft cloth
- > Do not treat the surfaces with abrasive cloths

MATERIALS > Structure made of recycled and recyclable metal

FINISHING

- > Low-emission powder coating (material inert)
- > Free from heavy metals
- > Absence of sharp edges and cutting edges
- > Anti-glare finish
- > It does not contain VOCs

STANDARD COMPONENTS

- > Nylon feet 13mmH
- > Screws for fixing between modules

COLORS

- > Available in 2 standard colors
- > Standard semi-gloss colors
- > Customizable colors available upon request and with an extra charge

www.dieffebi.com/docs/299/2832/DFB_Colour-Chart-2020.pdf

www.dieffebi.com/it/news

ACCESSORIES

- > Top in white lacquered glass RAL 9010
- > Cushions in M1 class fireproof fabric available in 7 standard colors: green, gray, black, light blue, light beige, orange, yellow
- > Chromed leveling feet h 110 mm
- > Set of 4 castors with brake - ø 65 mm
- > Set of 4 castors without brake - ø 65 mm

NET WEIGHT 13,00 Kg

PACKAGING

- > volume: 0,20 m³
- > recycled and recyclable cardboard
- > Multiple on pallets
- > Optimized for transport with CO2 reduction
- > Supplied: assembled
- > No. of packages: 1

END OF USE > Equipped with disassembly card for disposal

WARRANTY > Dieffebi guarantees that the product was made using high quality materials - [See warranty document](#)

DotBox

MADE IN ITALY

Corner unit 90°

W 410 x D 410 x H 627 mm

DESIGNER Hangar Design Group

WELLNESS AND ENVIRONMENT

> Green design in accordance with LEED® standards, to design and furnish environments with a high sustainability content



www.GreenTop.com



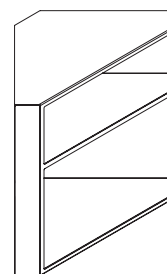
ASSEMBLY CONSTRAINTS

> Compositions:

on the wall center of the room on wheels



> Composizione: esempio a muro

1° LIVELLO
STEP 1

METAL TEST

> UNI EN ISO 2409:2013 > EN ISO 1520:2006
> NSS UNI EN ISO 9227:2017 > UNI 9300:2015
> UNI EN 15187:2007 > UNI EN ISO 6272-1:2013
> EN 12720:2013 > UNI EN 15185:2011
> EN 12721:2013 > UNI EN 15186:2012, met.B
> UNI 9429:2015

CLASS OF

> Class 0

REACTION TO

FIRE

POSITIONING

> Both on the wall and in the center of the room

MODULARITY

> Horizontal



dieffebi



MADE IN EUROPE

ASSUFFICIO
ASSOCIAZIONE FIDELIENEGARRECCI

ADIMEMBER

consip
acquistinretepa.it
Il Partner degli Appalti della Pubblica Amministrazione

Dieffebi SpA

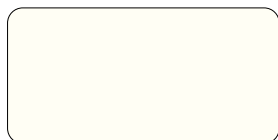
T +39 0438 4715
F +39 0438 471600
exportsales@dieffebi.com
vendite@dieffebi.com
www.dieffebi.com

DotBox

MADE IN ITALY

Varnish
Vernici
Vernis
Lacke

Cabinet Body
Corpo
Caisson
Korpus



-V1
S711 (RAL 9010)
Pure white



-V2
7044 (RAL 7044)
Silk grey

Glass
Vetro
Verre
Glas

Lacquer
Laccato
Laqué
Lackiert

Top
Piano
Plateau
Tischplatte



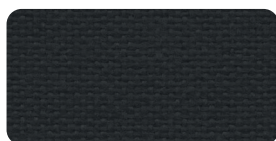
-G1
Bianco/White/Blanc/Weiß

Fabrics
Tessuti
Tissus
Textilien

Cushion
Cuscino
Coussin
Sitzkissen



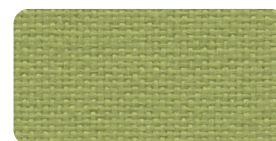
- T3
8009
Jet, Fidivi



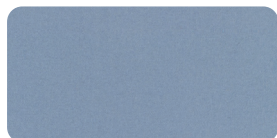
- T4
8033
Jet, Fidivi



-T7
213
Divina MD, Kvadrat



-T12
7041
Jet, Fidivi



- T18
701
Hero, Kvadrat



- T24
462
Mirage, Pugi · PG



-T31
133
Mirage, Pugi · PG